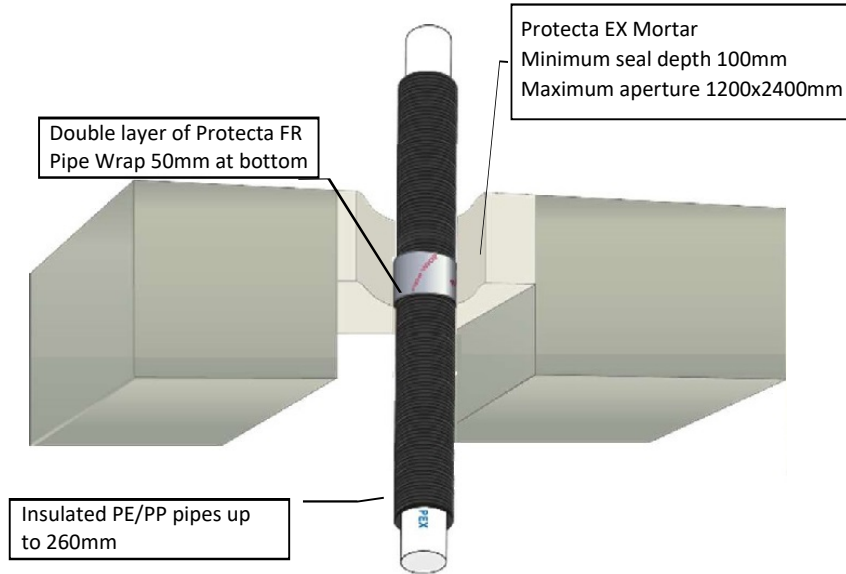


Protecta EX Mortar Insulated PP, HDPE, PEX Pipes in 100mm Concrete Floor or Wall

Installation Instructions

1. Ensure the faces of the aperture opening are free of dust and any other contaminants. The faces may be moistened for better adhesion.
2. The seal can be positioned to either side of the construction or anywhere in between.
3. When installing Protecta® EX Mortar in hollow floor slabs or boards, level the fire seal with the soffit side. Ensure there is sufficient thickness of concrete below the void for the depth of mortar. Where this is not the case, tubular voids should be filled with stone wool normally the same thickness as the depth of the floor slab. Alternatively, simply fire seal on both sides.
4. Install a shutter board to achieve the required thickness of mortar. Make sure that this achieves a very tight seal.
5. Pour clean water into a suitable mixing vessel and pour enough mortar to obtain the required consistency. Mix well to avoid lumps. Always add the mortar to the water, do not reverse this mixing process.
6. Once the desired consistency is achieved pour or trowel the mortar onto the shutter board making sure that it flows into all corners and around services. Apply a firm pressure to the mortar to eliminate any trapped air bubbles. Build up to the required depth.



Loadbearing Properties: NOTE following for Health and Safety requirements -
 Soft body impact, serviceability 500Nm. Soft body impact, safety in use 700Nm. Hard body impact serviceability 6Nm. Hard body impact, safety in use 10Nm. Concentrated load to 15kN on size up to 1500mm x1000mm (no failure), 4.85kN on sizes up to 1200mm x 2400mm.

Minimum separations and limitations
 An aperture can include several services, and they may also be different. Services within the system Protecta® FR Board seal do not require a minimum separation, except pipes where pipe insulation penetrates the seal and plastic pipe penetrations which should be a minimum of 30 mm from other services in the aperture. Services should be a minimum of 25mm from seal edges. The total amount of cross sections of services (including insulation) should not exceed 60% of the penetration area. The minimum permitted separation between adjacent apertures is 200mm.

As a part of our policy of on-going product development and testing, we reserve the right to modify, alter or change product specifications without giving notice. All information contained in this document is given in good faith and is provided for guidance only. Any drawings provided are for illustrative purposes only. As Polyseam has no control over the methods or competence of installation and of prevailing site conditions, no warranties, expressed or implied, is intended to be given as to the actual performance of the product mentioned or referred to herein and no liability whatsoever will be accepted for any loss, damage or injury arising from the use of the information given.

Permitted Aperture Sizes
 Where standard aperture sizes of 1200mm by 2400mm are stated, the following additional sizes are automatically permitted:
 1100mm x 2900mm 1000mm x 4000mm
 800mm x infinite length

System/FPA Register ID# FC568

Products	Protecta EX Mortar
Application	Fire stopping of insulated plastic pipes in rigid floors or walls
Construction	Minimum floor or wall thickness of 100mm and comprise aerated concrete or concrete with a minimum density of 650kg/m ³

Fire & Sound classification

All systems require layers of Protecta FR Pipe Wrap at the bottom of the seal and insulation may be combustible (9-50mm Elastomeric or foil faced phenolic foam) or non-combustible

PE, HDPE, PEX, ABS and similar pipes:-
 Up to 68mm diam and 2 layers of wrap
 FRR -/240/240
 Up to 178mm diam and 6 layers of wrap
 FRR -/240/240
 Up to 260mm diam and 10 layers of wrap
 FRR -/120/120

PP, PP-MV, PP-H, PP-R and similar pipes:-
 Up to 68mm diam and 2 layers of wrap
 FRR -/240/180
 Up to 178mm diam and 6 layers of wrap
 FRR -/240/240
 Up to 260mm diam and 10 layers of wrap
 FRR -/120/120

Sound reduction (seal only) STC 64



Protecta®

Polyseam Ltd, Huddersfield, WY, HD1 6SB

Sheet size: A4	Drawn date & no: 23/5/21
Scale: NTS	Drawn by: K.B